

Doppelzimmer Standard (New Wing)

👤 2 Personen 📏 28 m² 🛏️ 1 x Doppelbett

(Maximum Occupancy 2 Adults)

Spacious room with one double bed and an elegant finish.

Room facilities: Interior courtyard view, Phone, Safe, Air Conditioning, Wardrobe / Closet, Bathrobe, Free products for personal hygiene, Toilet, Bathroom, Shower.

Room size: 28 m²

Übernachtung

- 1 x Doppelbett

Ausstattung

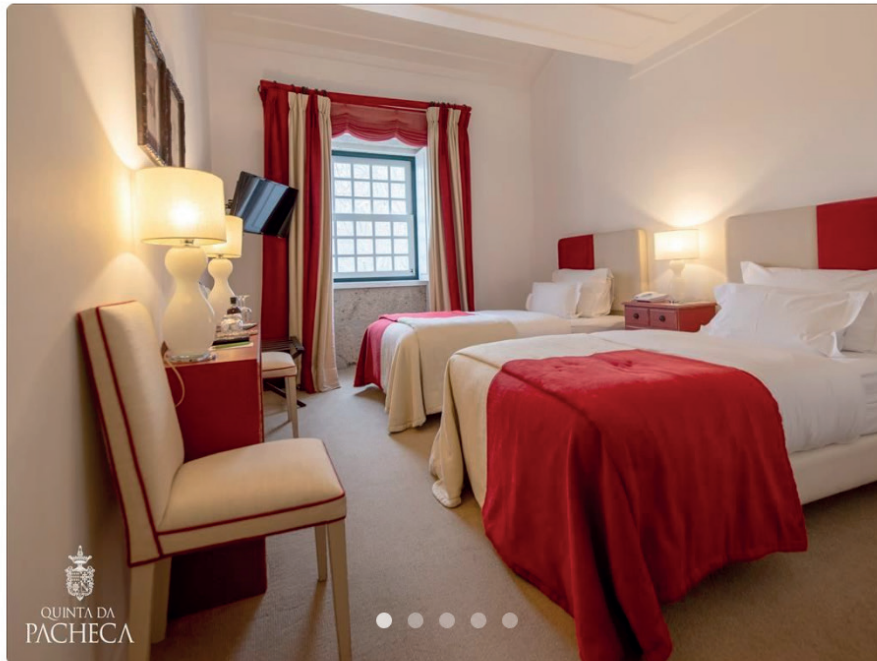
Nichtraucher	Safe	Dusche
Klimaanlage	Telefon	Flachbildschirm-TV
Minibar	Eigenes Bad	Wlan
Schallisoliert	Fön	

Standard:

295 Euro pro Nacht

Weinreben Aussicht:

330 Euro pro Nacht



Zweibettzimmer – Standard

👤 2 Erwachsene 🏠 28 m² 🛏️ 2 x Einzelbett

(Maximum Occupancy 3 Adults or 2 Adults and 1 Children)

Spacious room with two single beds and an elegant finish.

Room facilities: Courtyard and Vineyards view , Phone, Safe, Air Conditioning, Wardrobe / Closet, Bathrobe, Free products for personal hygiene, Toilet, Bathroom, Bath or Shower.

Possibility to attach the beds.

Room size: 28 m²

Übernachtung

- 2 x Einzelbett

Ausstattung

Nichtraucher

Telefon

Badewanne

Klimaanlage

Eigenes Bad

Flachbildschirm-TV

Minibar

Fön

Wlan

Safe

Dusche

295 Euro pro Nacht



Doppelzimmer – Standard

👤 2 Erwachsene 📏 28 m² 🛏 1 x Doppelbett

(Maximum Occupancy 3 Adults or 2 Adults and 1 Children)

Spacious room with one double bed and an elegant finish.

Room facilities: Courtyard and Vineyards view, Phone, Safe, Air Conditioning, Wardrobe / Closet, Bathrobe, Free products for personal hygiene, Toilet, Bathroom, Shower.

Room size: 28 m²

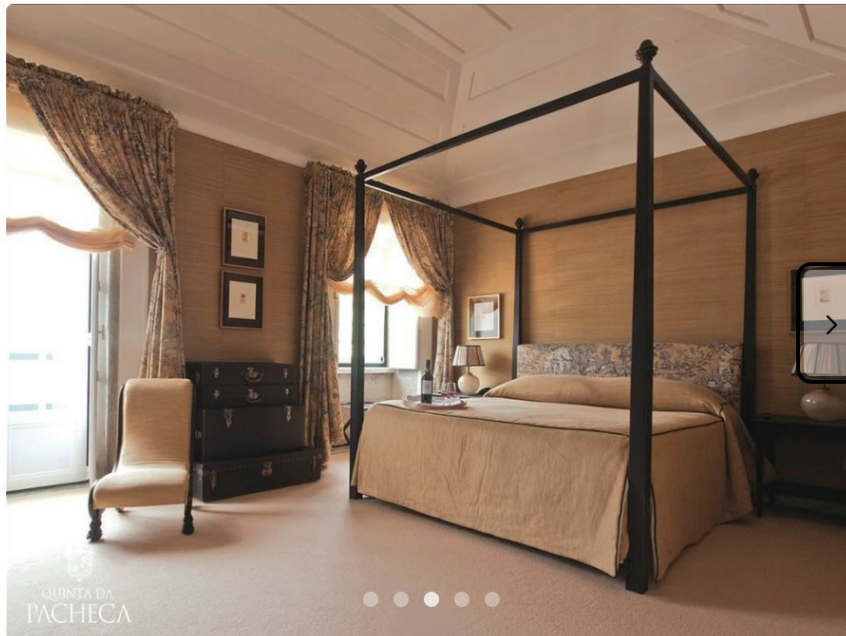
Übernachtung

- 1 x Doppelbett

Ausstattung

Nichtraucher	Telefon	Flachbildschirm-TV
Klimaanlage	Eigenes Bad	Wlan
Minibar	Fön	
Safe	Dusche	

295 Euro pro Nacht



Doppelzimmer Superior (Classic Wing)

👤 2 Erwachsene 📏 35 m² 🛏 1 x Doppelbett

(Maximum Occupancy 3 Adults or 2 Adults and 2 Children)

Spacious rooms, beautiful furnished, with balcony.

Room facilities: Small Balcony, River and Vineyards View, Phone, Safe, Air Conditioning, Wardrobe / Closet, Bathrobe, Free products for personal hygiene, Toilet, Bathroom, Bath or Shower.

Room size: 35 m²

(Maximum Occupancy 3 Adults or 2 Adults and 2 Children)

Spacious rooms, beautiful furnished, with balcony.

Room facilities: Small Balcony, River and Vineyards View, Phone, Safe, Air Conditioning, Wardrobe / Closet, Bathrobe, Free products for personal hygiene, Toilet, Bathroom, Bath or Shower.

Room size: 35 m²

Übernachtung

- 1 x Doppelbett

Ausstattung

Nichtraucher

Balkon

Dusche

Klimaanlage

Telefon

Badewanne

Minibar

Eigenes Bad

Flachbildschirm-TV

Safe

Fön

Wlan

nicht verfügbar



Doppelzimmer Superior – Wine Barrel

👤 2 Erwachsene 📏 30 m² 🛏️ 1 x Doppelbett

Double room Superior Wine Barrell – Design by Quinta da Pacheca
(Maximum Occupancy 2 Adults)

Can you imagine yourself waking up on the middle of a vineyard, and experience

the rurality of one of the most famous wine regions in the world?

Quinta da Pacheca created the Wine Barrels, bold architectural projects of suites

in the form of Wine Barrels, reinforcing with originality the enotouristic offer.

In an idyllic and romantic setting, Wine Barrels will provide you a unique experience

of contact with nature and the monumental reality of the Douro Wine Region.

Unique moments of rest await for you in an environment of rurality, but with

all the comfort of the most modern hotel units.

Übernachtung

- 1 x Doppelbett

Ausstattung

Nichtraucher	Eigene Terrasse	Flachbildschirm-TV
Klimaanlage	Telefon	Wlan
Minibar	Eigenes Bad	Radio
Schallisoliert	Fön	
Safe	Dusche	

500 Euro pro Nacht